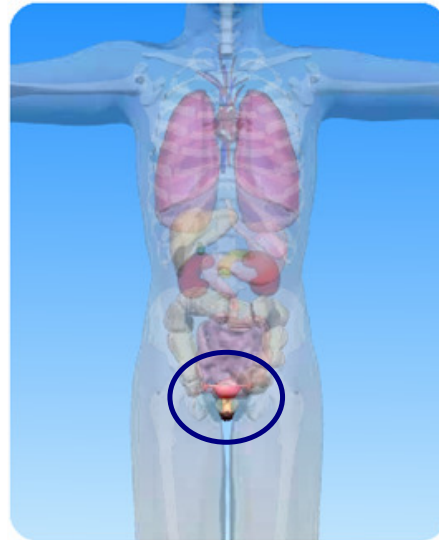


Body Builder



a) On the diagram of the female abdominal cavity above, what is the circled part?

b) Choose words from the box to fill the blanks in the sentences:

| | | |
|--------------|------------------|----------------------|
| baby | womb | abdominal |
| egg | fallopian | fertilisation |
| grown | ovaries | sperm |

The female reproductive organs are found in the cavity. There are two in which the egg cells develop. Once a month a ripe egg passes down one of the tubes. If are present, of the egg may take place.

The fertilized then continues down into the uterus (or) where it grows into a

After nine months, when the baby is fully, the baby is born by passing out through the vagina.